

## PRODUCT SHEET



### VERSIONS



Icarus 3m/9'10"

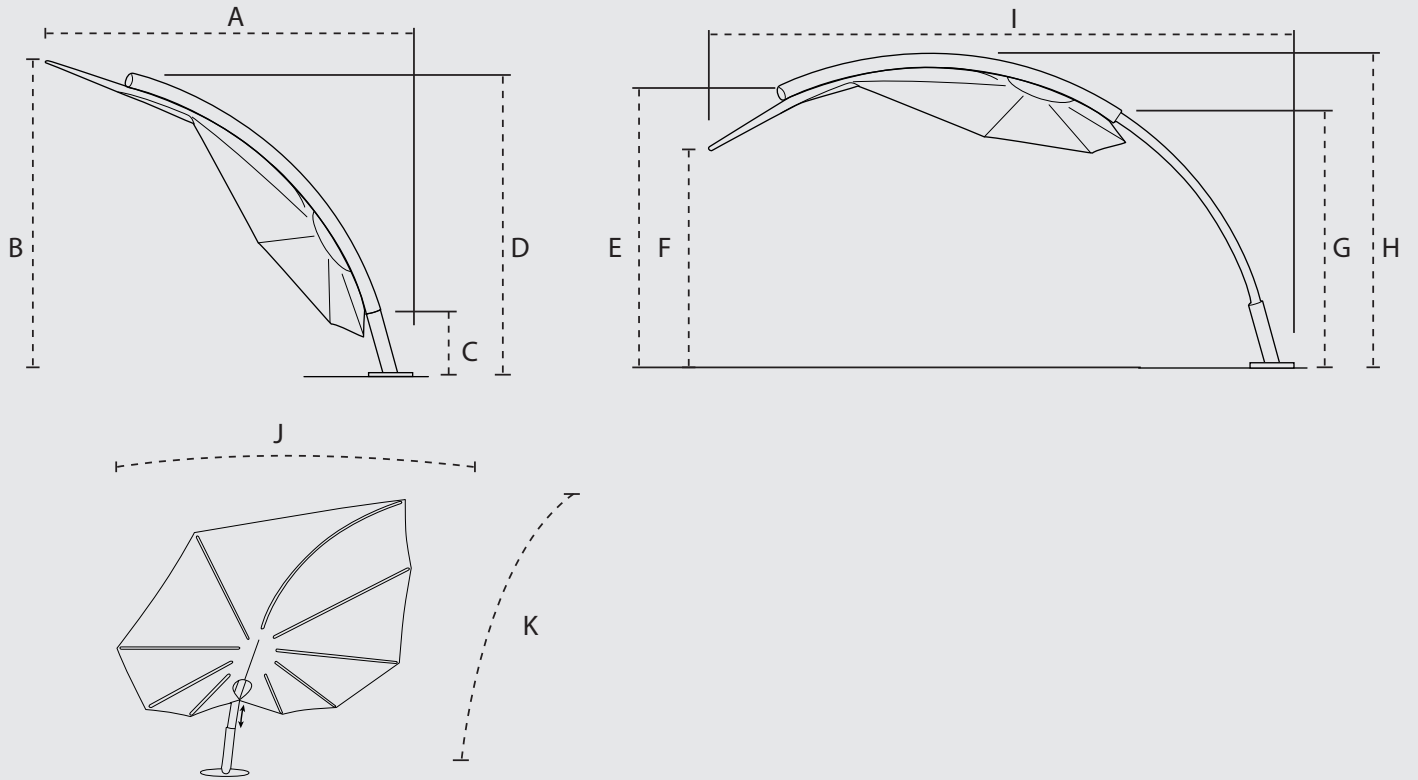
### POSITIONS



### COLORS

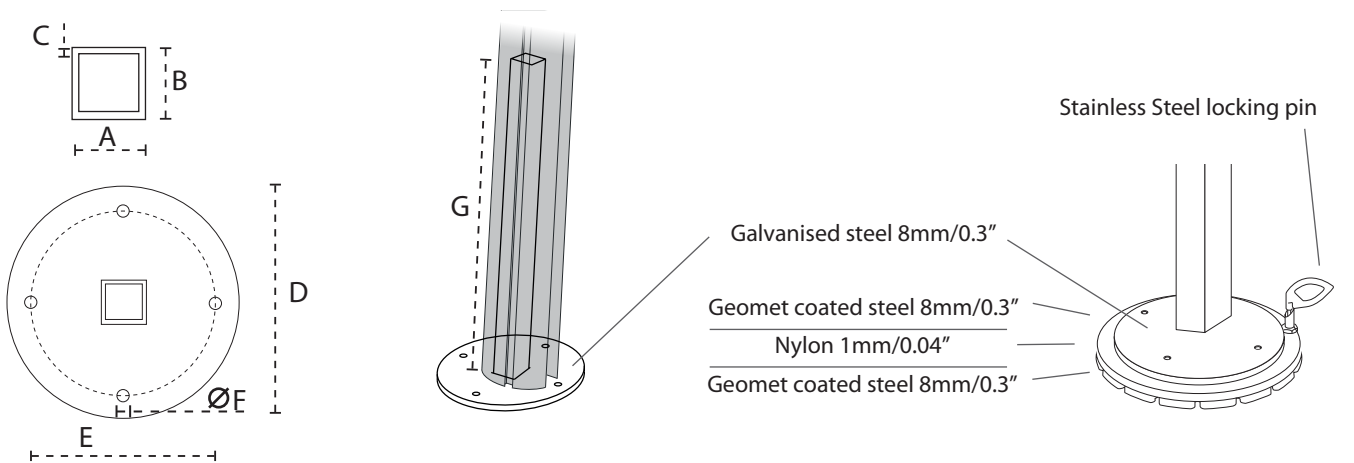
	Alba	Roma	Taupe	Stonegrey	Mandarine	Red	Terra	Sunflower	Camel	Mint	Nero
PREMIUM											
LIMITED											
	Canvas	Taupe	Granite	Orange	Paris Red	Pink	Lagoon	Olive			

DIMENSIONS



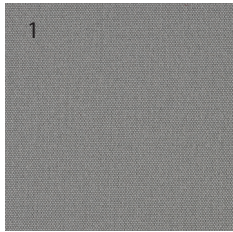
	A cm/ft	B cm/ft	C cm/ft	D cm/ft	E cm/ft	F cm/ft	G cm/ft	H cm/ft	I cm/ft	J cm/ft	K cm/ft
Icarus	226/7'5"	248/8'2"	40/1'4"	241/7'11"	203/6'8"	175/5'9"	185/6'1"	249/7'7"	429/14'1"	300/9'10"	300/9'10"

DIMENSIONS/MATERIALS SPIGOT



	A mm/inch	B mm/inch	C mm/inch	D mm/inch	E mm/inch	F mm/inch	G mm/inch
Round support	40/1.6"	40/1.6"	3/0.12"	215/8.5"	170/6.7"	11/0.43"	490/1'7.3"

MATERIALS



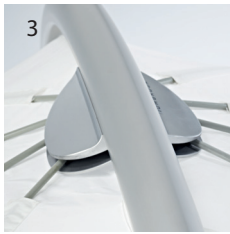
**Fabric**

- 'Premium': Olefine 190 g/m<sup>2</sup>
- 'Limited': 100% Sunbrella Acryl 270 g/m<sup>2</sup>
- For more detailed info, see spec Fabric



**Nylon**

- Self lubricating for optimal sliding



**Glass Fiber Ribs**

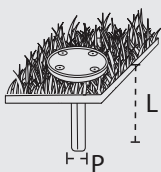


**Stainless steel**

- Alloy Aisi 304
- Mirror polished



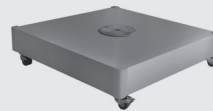
BASE OPTIONS



CONCRETE ANCHORAGE

L	P	⚖️
35 cm	40x40x3 mm	n/a
1'1.8"	1.6"x1.6"x0.12"	n/a

- Galvanised steel
- Pit of 60x60x40cm
- Or 2"x2"x1'4" filled with concrete

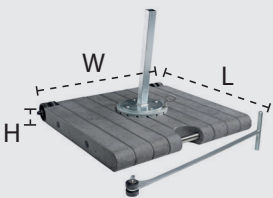


ALU COVER - optional

L	W	H	⚖️
85 cm	85 cm	12,3 cm	10 kg
34"	34"	5"	25 lb

Dimensions and weight of cover only

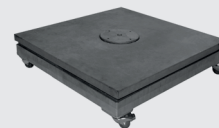
- Anodized aluminium plate 3mm



MOBILE BASE

L	W	H	⚖️
80 cm	80 cm	8.5 cm	120 kg
2'7"	2'7"	3.3"	265 lb

- High quality surface finish
- Demountable for easy transport
- Easy manipulation with handle

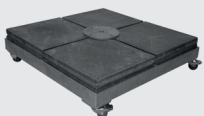


DECORATIVE COVER PLATE IN BLUESTONE - optional

L	W	H	⚖️
85 cm	85 cm	4 cm	70 kg
34"	34"	1,5"	155 lb

Dimensions and weight of cover only

- Galvanised steel
- Fill with 8 tiles 40x40x4cm or or 12 tiles 16"x16"x2"



TILE BASE

L	W	H**	⚖️
85 cm	85 cm	15 cm	190 kg*
34"	34"	6"	420 lb

\* incl. tiles \*\* excl. wheels

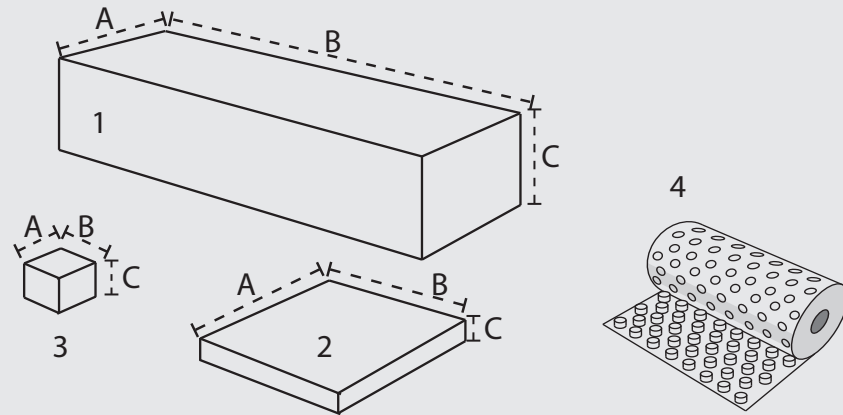
- Galvanised steel
- Fill with 12 tiles 40x40x4cm or 12 tiles 16"x16"x2"

4 SWIVELING WHEELS - optional



H	⚖️
6,5 cm	2 kg
2,5"	5 lb

PACKAGING & TRANSPORT



	Qty #	Type	A cm/ft,inch	B cm/ft,inch	C cm/ft,inch	Net weight kg/lb	Brut weight kg/lb
Umbrella Box	1	1	64/2'1"	305/10'0"	31/1'0"	9.3/20.4	35/77
Mobile Base Boxes	1	2	29/11.4"	85/2'9.5"	9/3.5"	0,63/1.4	6,0/13
	3	2	29/11.4"	85/2'9.5"	9/3.5"	0,63/1.4	40/88
Tile Base Box	1	2	26/10.2"	86/2'10"	8/3.1"	0,59/1.3	10/23
In-Ground Fitting Package	1	4	22/8.7"	22/8.7"	38/1'3"	n/a	3.4/7.5
Alu Cover Box	1	2	87/2'10.3"	87/2'10.3"	14/5.5"	1.2/2.65	10/22

NICE TO KNOW

- All parts can be ordered separately
- Designed and made in Belgium
- 2 years on decoloration of Premium fabric / 3 years on Limited
- 2 years warranty on structure
- For more info check: [www.umbrosa.com](http://www.umbrosa.com)  
[www.youtube.com/UmbrosalInnovation](http://www.youtube.com/UmbrosalInnovation)  
[www.facebook.com/Umbrosa](http://www.facebook.com/Umbrosa)

As a guideline we refer to the following wind speeds  
 6 beaufort, 50km/h, 31 mph.  
 Base is permanently fixed.

Tested at **TU Delft**



Umbrella includes:

Manual



Optional:



- Storage Bag
- PU coated fabric
  - Easy to use thanks to zipper and auxiliary tool