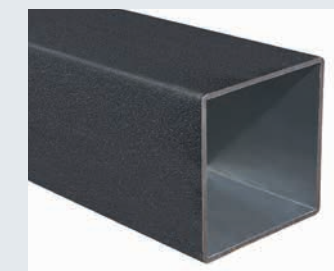


Aluminium



Alu Poker/Double

- I Struttura modulare in alluminio composta da 2 (Double) o 4 (Poker) ombrelloni ancorati ad un unico sostegno studiata per la copertura di ampie superfici con il minimo ingombro.
- UK Aluminium structure made of 2 (Double) or 4 (Poker) parasols fixed at the same pole, suitable for big surfaces and minimum encumbrance.
- D Alustruktur mit 2 (Double) oder 4 (Poker) Schirmen, die am selben Mast befestigt sind. Raumsparend und fuer grosse Flaechen geeignet.
- F Structure en aluminium avec 2 (Double) ou 4 (Poker) parasols fixés à un mat. Pour grandes surfaces avec encombrement minimum.
- E Estructura modular de aluminio compuesta por 2(doble) o 4 (poker) parasoles unidos por un solo mástil, muy adecuado para amplias superficies con poco espacio.
- NL Parasolmast met 2 (Double) of 4 (Poker) parasols. Deze parasols (Double ca. 25 m² en Poker ca. 50 m²) zijn aan 1 mast bevestigd. Zijn daardoor ruimtebesparend en zeer geschikt voor grotere oppervlakten en terrassen.



50. Alu Poker / Double

I

Struttura robusta composta da 4 ombrelloni (Poker) oppure da 2 ombrelloni (Double).

Telaio in alluminio e componenti in acciaio; verniciato a polveri colore antracite. Accessori in nylon.

F

Structure robuste avec 4 parasols (Poker) ou 2 parasols (Double). Armature en aluminium vernis, composants en acier couleur gris anthracite. Accessoires en nylon.

UK

Strong structure made of 4 cantilever parasols (Poker) or 2 cantilever parasols (Double).

Frame in coated aluminium and steel components powder coated anthracite grey. Accessories made of nylon.

E

Estructura robusta que se compone de 4 parasoles (Poker) - 2 parasoles (Double). Herrajes: Aluminio y acero color gris antracita. Accesorios de nylon.

D

Starke Struktur mit 4 Pendelschirmen (Poker) oder 2 Pendelschirmen (Double)

Gestell aus pulverbeschichtetem Aluminium und Bestandteile aus Stahl Farbe Anthrazitgrau. Zubehoer aus Nylon.

NL

Zware mast met 4 (Poker) - 2 (Double) vrijhangende parasols: Mast en baleinen: Grijs geëpoxeerd aluminium. Overige metalen delen: Grijs geëpoxeerd staal.

		MEASURES		CHARACTERISTICS					
	CGD			KG	M ²				
6,0x6,0	C6060 APO			170	1,00	120x120	ALU DARK	ALU DARK	18x30
7,0x7,0	C7070 APO			185	1,00	120x120	ALU DARK	ALU DARK	18x30
3,0x6,0	C3060 ADO			100	0,80	120x120	ALU DARK	ALU DARK	18x30
3,5x7,0	C3570 ADO			110	0,80	120x120	ALU DARK	ALU DARK	18x30

FINISHING							COLOUR RANGE							OPTIONAL				BASES				
					INOX		ACRYL 350 GR								GOLD			N°2 BC5151 N°6 BC5050	N°4 BC5151 N°12 BC5050	N°2 BV5050	N°4 BV5050	FISSAGGIO TERRA INGROUND FIX
•	•	•	•	•	•	•	 A15	 A1N	 T2S	 T3S	 T6N	 T7N	 S1N	•	-	•	•	/		/		
•	•	•	•	•	•	•	 A15	 A1N	 T2S	 T3S	 T6N	 T7N	 S1N	•	-	•	•	/		/		
•	•	•	•	•	•	•	 A15	 A1N	 T2S	 T3S	 T6N	 T7N	 S1N	•	-	•	•	/		/		
•	•	•	•	•	•	•	 A15	 A1N	 T2S	 T3S	 T6N	 T7N	 S1N	•	-	•	•	/		/		



Struttura modulare composta da 4 o 2 ombrelloni ancorati a un unico sostegno centrale; dimensione totale della copertura 6x6 o 7x7 mt.

TELAIO: Interamente in alluminio e acciaio verniciati a polveri colore grigio antracite. Sostegno verticale sez. 12x12 cm. Stecche in alluminio sezione 18x30 mm, facilmente intercambiabili abbinata al nuovo sistema di corone in plastica (brevettato Scolaro) per aumentare la resistenza e durata, semplificare la manutenzione e migliorare il design. Con aggancio singolo dedicato per ogni stecca. Tutti gli accessori sono zincati antiruggine e verniciati a polveri colore antracite.

Apertura e chiusura con meccanismo a manovella con elegante cornice coprifilo. Stecca blocco antivento per rendere l'ombrellone più stabile e resistente in caso di vento e con possibilità di inclinazione. Inclusa base in metallo.

TESSUTO: Acrilico Dralon 350gr/m2 impermeabilizzato e trattato antimuffa garantito Teflon. Con camino antivento. Con o senza volant. Colore Ecu

Strong structure made of 4 or 2 parasols hanging on one central post. The dimension of the whole structure is 6x6 or 7x7 mt.

FRAME: Aluminum and steel structure epoxy coated anthracite color. Side post section 12x12 cm. Easily interchangeable strong aluminum ribs, section 18x30, with a new plastic crown (patented by Scolaro) in order to increase the resistance and timing, simplify the maintenance and to improve the design. Ribs are properly fixed to the crown one by one. All components are epoxy coated anthracite color.

Easy opening and closing with crank mechanism, whose steel wire is covered by a smart covering. With wind stop rib for a better stability of the parasol in windy condition and to allow the inclination of the parasol. Metallic base is included.

FABRIC: Acrylic Dralon 350gr/m2 waterproof Teflon and anti-mold treated. With wind cap. Available with and without valance. Ecu color



.Dimensione (metri)
.Dimensions (meters)
.Masse (Meter)
.Dimensions (metrès)
.Dimensiones (en metros)
.Afmeting in (meters)



.Stecche
.Ribs
.Streben
.Baleines
.Varillas
.Baleinen



.Piastrre cemento
.Cement slabs
.Kiesbetonplatten
.Dalles ciment
.Planchas de cemento
.Betontegel



.Viteria in inox e ottone nichelato
.Screws in Stainless steel and nickel plated brass
.Edelstahlschrauben und vernickeltes Messing
.Visserie inox et laiton nickelé
.Tornillos en acero inoxidable y bronce niquelado
.Schroeven van rvs en vernikkeld messing



.Codice
.Code
.Artikelcode
.Code
.Código
.Artikelcode



.Set canaline
.Raingutter set
.Regerinnen
.Set gouttières
.Canalizador Lluvias
.Set regengoten



.Fodero
.Cover bag
.Schutzhuelle
.Housse
.Forro
.Afdekhoes



Pag. 68

.Tipo finitura della struttura/sostegno/componenti
.Finishing for frame/structure/components
.Ausfuehrung des Gestells/der Struktur/der Bestandteile
.Finition armature/structure/composants
.Tipo de acabado de la estructura/Soportes/componente



.Lunghezza
.Length
.Laenge
.Longueur
.Longitud
.Lengte



.Con base/suportto
.With base/support
.Mit Staender/Huelse
.Avec base/support
.Con base/ soporte
.Inclusief standaard



.Doppia carrucola
.Double pulley
.Doppelter Seilzug
.Double poulie
.Doble polea
.Dubbele katrollen



.Colore dei componenti/stecche
.Component/Ribs colour
.Farbe der Bestandteile und Streben
.Couleur des composants et baleines
.Color de los componentes ò piezas/Varillas ò listones



.Peso
.Weight
.Gewicht
.Poids
.Peso
.Gewicht



.Sezione stecche
.Rib section
.Strebenprofil
.Section baleines
.Sección varillas
.Profil baleinen



.Sistema telescopico
.Telescopic system
.Teleskopsystem
.Système telescopique
.Sistema telescópico
.Telescoop systeem



.Stecca con sistema "easy change"
.Ribs with "easy change" system
.Streben mit "easy change" System
.Baleines avec "easy change" système
.Varillas con sistema de " cambio fácil"
.Baleinen met het "easy change" systeem



.Volume (m3)
.Volume (m3)
.Volumen (m3)
.Volume (m3)
.Volumen (m3)
.Volume (m3)



.Camino antivento
.Wind cap
.Windfang
.Souffle
.Chimenea antiviento
.Windvang



.Sistema retrattile
.Retractile system
.Einziehbares System
.Système retractile
.Sistema retráctil
.Inklapbaar systeem



.Ø Palo (mm)
.Ø Pole (mm)
.Ø Mast (mm)
.Ø Mat (mm)
.Diametro mm (asta)
.Ø Mast (mm)



.Volant
.Valance
.Volant
.Volant
.Faldón
.Volant



.Base girevole a 360°C
.Revolving base 360°C
.360°C drehbarer Staender
.Base tournant 360°C
.Base giratoria 360°
.360° draaibaar



.Massima Stabilità Ottenibile
.Maximum Obtainable Stability
.Maximal Erhaeltliche Stabilitaet
.Maximum De Stabilitée Realisable
.Maxima Estabilidad Posible
.Maximaal Bereikbare Stablieiteit



.Sezione sostegno (mm)
.Support section (mm)
.Mastprofil (mm)
.Section support (mm)
.Sección soporte (mm)
.Mast (mm)



.Blocco antivento
.Wind stop
.Windstop
.Block antivent
.Freno para el viento
.Windstop



.Inclinazione fino a 20°
.Inclination up to 20°
.Neigung bis zu 20°
.Inclination jusqu'à 20°
.Inclinación hasta 20°



.Peso consigliato in condizioni normali
.Recommended weight in normal condition
.Empfohlenes gewicht unter normalen bedingungen
.Poids recommande dans des conditions normales
.Peso recomendado en condiciones normales
.Aanbevolen gewicht onder normale omstandigheden



.Otonatura
.Brassfinishing
.Vermessigungen
.Laiton doré
.Terminaciones doradas
.Koper beslag



.Con meccanismo manovella
.With winding mechanism
.Mit Kurbelmechanismus
.Avec mécanisme manivelle
.Con manivela
.Met opwindmechanisme



.Inclinazione fino a 60°
.Inclination up to 60°
.Neigung bis zu 60°
.Inclination jusqu'à 60°
.Inclinación hasta 60°



.Peso minimo richiesto
.Minimum ballast required
.Erforderliches mindestgewicht
.Poids minimum requis
.Peso minimo requerido
.Minimaal vereist gewicht